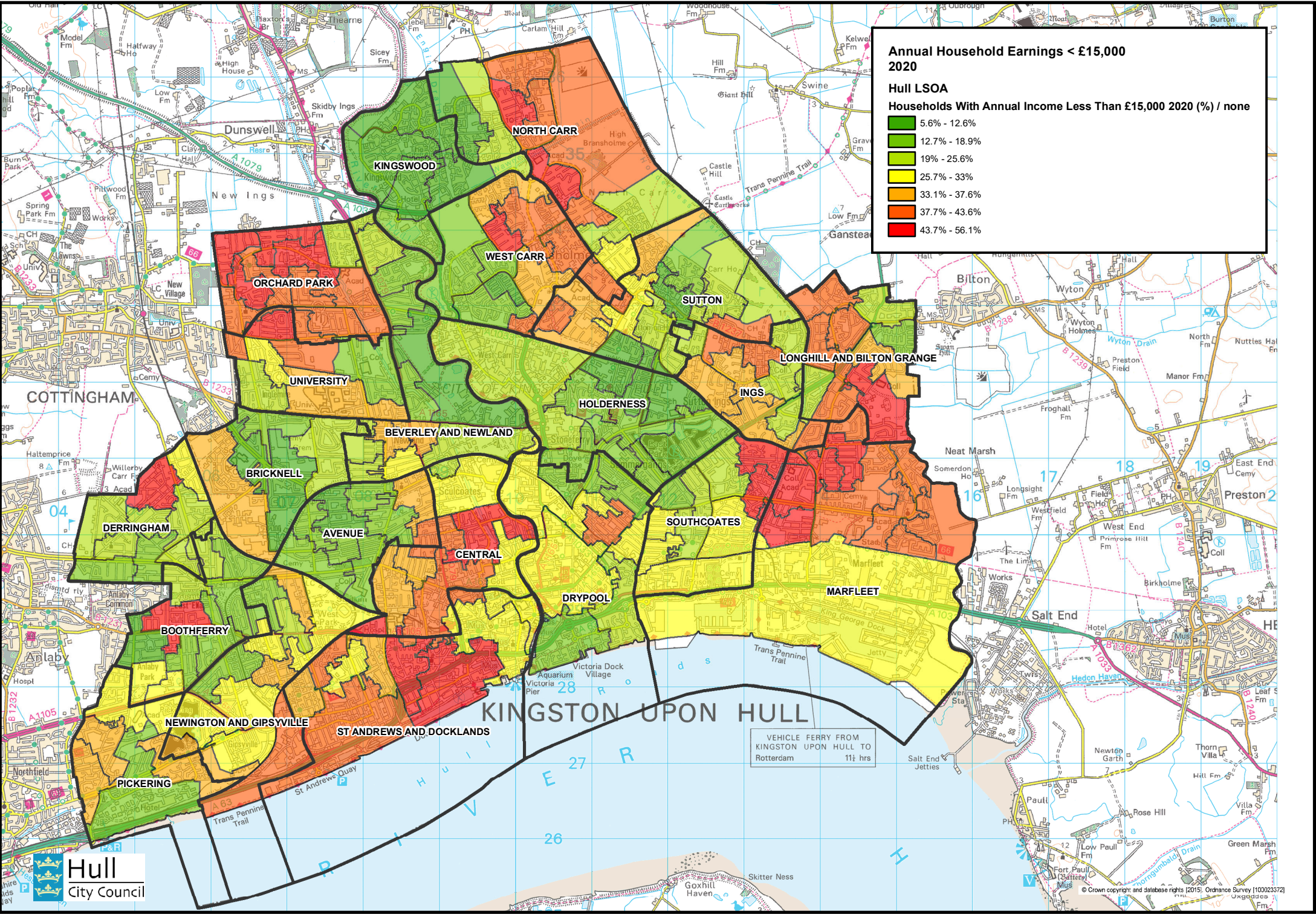


**Annual Household Earnings < £15,000  
2020**

**Hull LSOA**

**Households With Annual Income Less Than £15,000 2020 (%) / none**

- 5.6% - 12.6%
- 12.7% - 18.9%
- 19% - 25.6%
- 25.7% - 33%
- 33.1% - 37.6%
- 37.7% - 43.6%
- 43.7% - 56.1%



VEHICLE FERRY FROM  
KINGSTON UPON HULL TO  
Rotterdam 11 hrs