
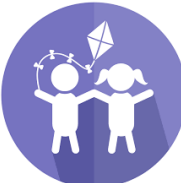






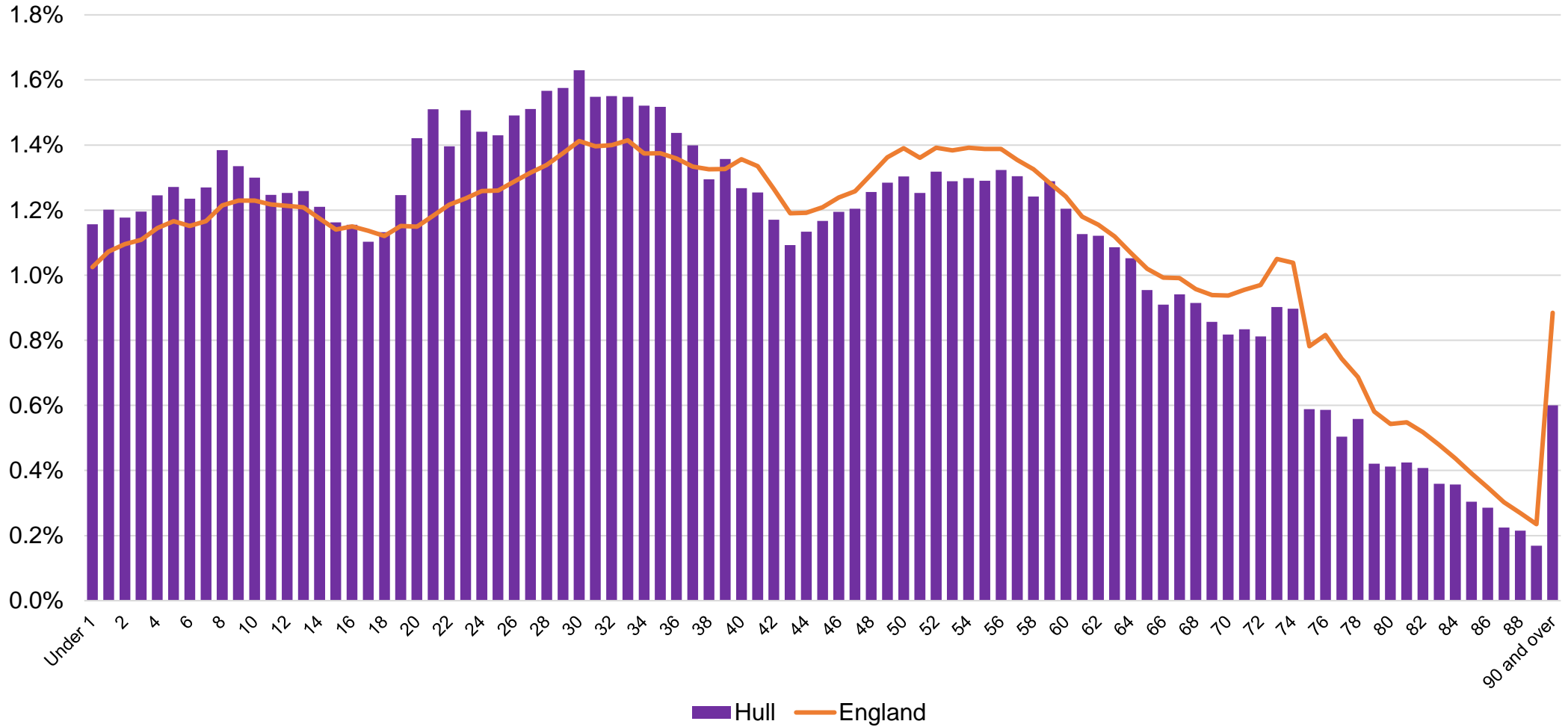
2021 Census: Demography and Migration



Population Estimates by Single Year of Age

	 Total Population	 0 – 15 Years	 16 – 64 Years	 65 + Years	 Median Age	 Population Density
Hull 2021	267,010	53,135 19.9%	173,048 64.8%	40,827 15.3%	36 Years	3,730.1 Per km ²
Hull Change 2011 - 2021	+ 10,604 + 4.1%	+ 4,769 + 9.9%	+ 739 + 0.4%	+ 5,096 + 14.3%	- No Change	+ 141.5 From 3,588.6
England 2021	56,490,045	10,483,094 18.6%	35,605,651 63.0%	10,401,300 18.4%	40 Years	433.5 Per km ²
England Change 2011 - 2021	+ 3,477,589 + 6.6%	+ 460,258 + 4.6%	+ 1,276,560 + 3.7%	+ 1,740,771 + 20.1%	+ 1 Year From 39	+ 26.6 From 406.9

2021 Hull Census Population by Single Year of Age (%)



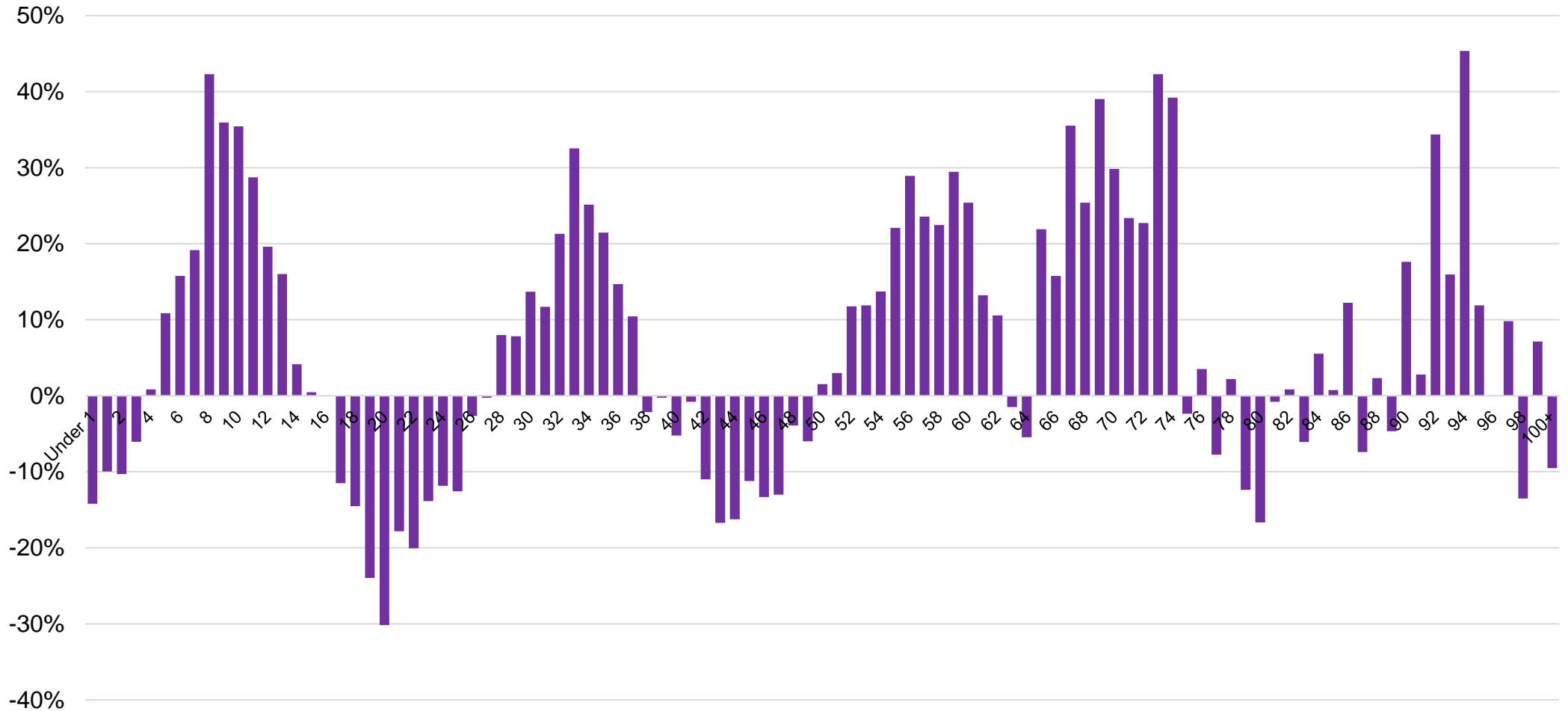
Larger Proportion in Hull Than Nationally:

- 0 – 16 Years
- 18 – 37 Years
- 39 Years
- 59 Years

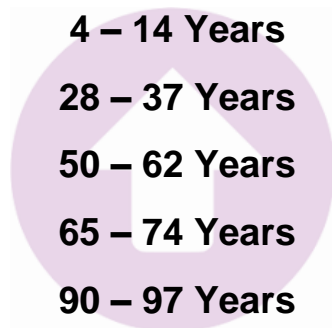
Smaller Proportion in Hull Than Nationally:

- 17 Years
- 38 Years
- 40 – 58 Years
- 60 + Years

Change in Hull Census Population 2011 - 2021 by Single Year of Age (%)



Key Population Growth:



Key Population Decline:

